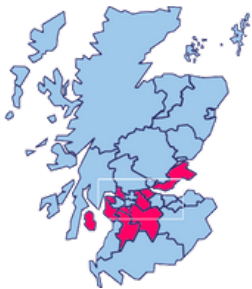


# Journey of Finding People in Place



## Identified local authority areas

Nine areas in total receiving proportionally less independent funding.

## Worked with other funders in 2013

...to find out which areas independent funders weren't reaching.



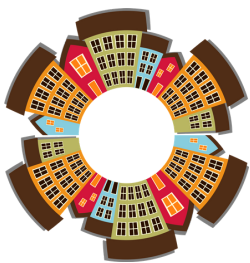
## Find areas facing multiple complex challenges

Working with the Improvement Service, considering all SIMD indicators, and seeking out communities of 2,000 people or less.



## Learn more about identified communities

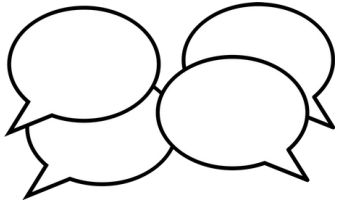
What are the community's strengths? Are other funders or government doing similar work there? Are local services changing? Etc.



## Make a Pledge to the community



We collaborate to achieve change.



### Talk to local government

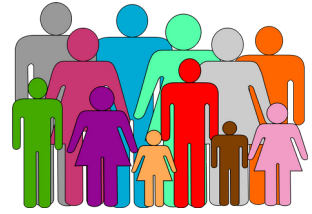
We make a pledge with local authorities, finding that supportive relationships are the key to success.



Relationships are at the heart of our programme.

### Listen to local people and voices that aren't necessarily being heard

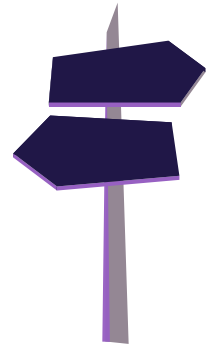
...what do people want to happen?



### Build relationships

Across the community and with local stakeholders.

### What happens next is up to the community



### But we'll be there every step of the way

Offering a devoted staff member and a team committed to listening and getting alongside communities.



W: [www.corra.scot](http://www.corra.scot) T: 0131 444 4020

